

## The Greyhound Pub

The Greyhound in Wigginton is a friendly traditional village inn with a wide selection of real ales, wines and fine food. En-suite accommodation is also available and the pub has disabled access. Cyclists and walkers are welcome. Phone 01442 824631.

## The Beacon View Walk

The Beacon View walk goes through Tring Park on King Charles Ride. Tring Park is a historic landscape with remnants of an early 18th century landscape. It is managed by the Woodland Trust and is open access for walkers. Cyclists and horse riders can enjoy the Park by using the King Charles Ride. The Park has woodland areas, chalk grassland and affords fine views of Tring and Ivinghoe Beacon, a prominent grassy hill.

Criss-crossed by historic transport routes, this area has been well used by travellers since the first settlements appeared in prehistoric times.

The Ridgeway, thought to be Britain's oldest road, follows the ancient chalk ridge route used by prehistoric man. The path has been used as a transport route for droving livestock, traders and invaders for over 5,000 years. Starting in Avebury, Wiltshire, The Ridgeway travels on the high ground to Ivinghoe Beacon.

In the Dark Ages The Ridgeway was a main route for the Saxons and Vikings who fought many battles along it. In medieval times it was used by drovers bringing livestock from Wales and the West Country to Hertfordshire and surrounding areas.

The Icknield Way, travelling along a similar route to The Ridgeway, is thought to date back to Neolithic times (4,000 – 2,000 BC). It was the trade route of the Iceni, an early British tribe, linking the Norfolk Coast to the downlands of south central England. This trail runs through Wigginton and Tring Park and can be identified by a stone axe depicted on waymark disks.

The Beacon View Walk also takes in the highest part of the Grand Union Canal. Completed in 1797 the canal linked London with the coalfields of the Midlands. After the building of the railways the use of canals for transporting coal and bricks declined. Now the canal is used for recreation and is a haven for wildlife.



This is one of a series of walks through the Chilterns Area of Outstanding Natural Beauty (AONB).

The Chilterns Conservation Board works to conserve the natural beauty of the Chilterns and to increase public understanding and enjoyment of them. There are many other walks and rides in the Chilterns:

Visit [www.chilternsaonb.org/activities.asp](http://www.chilternsaonb.org/activities.asp) or call 01844 355500 for other Chiltern Country Walks.

Visit [www.chilternsociety.org.uk](http://www.chilternsociety.org.uk) or call 01494 771250 for information on the Chiltern Society's walk programme, to obtain Chiltern Society footpath maps or to join the Society.

### Pub, restaurant and B&B in Wigginton:

Visit the highest pub in the Chilterns!

The Greyhound Inn, Wigginton: a friendly, traditional village inn with a wide selection of real ales, wines and fine food. Walkers and cyclists are welcome. Open for food seven days a week.



Enjoy log fires, locally sourced produce and a warm welcome.

Why not stay over and explore the area at leisure? There are 3 large en-suite rooms.

Tel. 01442 824631 [www.greyhoundtring.co.uk](http://www.greyhoundtring.co.uk)

For further walks and rides in the area visit [www.chilternsaonb.org/activities.asp](http://www.chilternsaonb.org/activities.asp)

The Chilterns  
CONSERVATION BOARD  
[www.chilternsaonb.org](http://www.chilternsaonb.org)  
Tel: 01844 355504



01727 848168  
[www.hertslink.org/cms](http://www.hertslink.org/cms)

The Chiltern  
Society  
We care for the Chilterns

[www.chilternsociety.org.uk](http://www.chilternsociety.org.uk)

# Chilterns Country

## Beacon View Walk

Walk Description: Long: 6.5m (10.5km)  
Short: 2m (3km)

Walk Time: Long: allow 2 1/2 hours  
Short: allow 1 hour

Start/Finish: The Greyhound, Chesham Road  
Wigginton, Herts

The Chilterns  
AREA OF OUTSTANDING NATURAL BEAUTY

## How to get to the start

**By car:** The Greyhound is in the village of Wigginton just south of Tring. It is on Chesham Road in the heart of the village, take a right hand turn towards Chesham when you enter the village, The Greyhound is on the right and has a large car park.

**Train, walking and cycling:** You can also join the walk from Tring Station by turning left out of the station and joining the walk at the start of the Grand Union Canal section. Tring Railway Station is on the London (Euston) to Birmingham line. Walkers and cyclists from Hemel Hempstead or Berkhamsted can also join the route here. Tring Station and The Greyhound both have secure cycle parking facilities. There is parking at Tring station long term car park; £5 except on Sundays when it is free.

**Bus:** Buses serve Tring station and the village of Wigginton. Ring Traveline on 0871 200 22 33 for train and bus times. [www.traveline.info](http://www.traveline.info)

## Notes on the walk Clockwise from The Greyhound



From the pub head towards the crossroads and turn first left onto Wick Road. This becomes a farm track.



Enter the woodland and join King Charles' Ride, an avenue lined with majestic lime trees planted in the late eighteenth century.



For the short route turn right behind some houses and head back down to Wick Road. For the long route keep going, following the Ridgeway, and cross Fox Road.



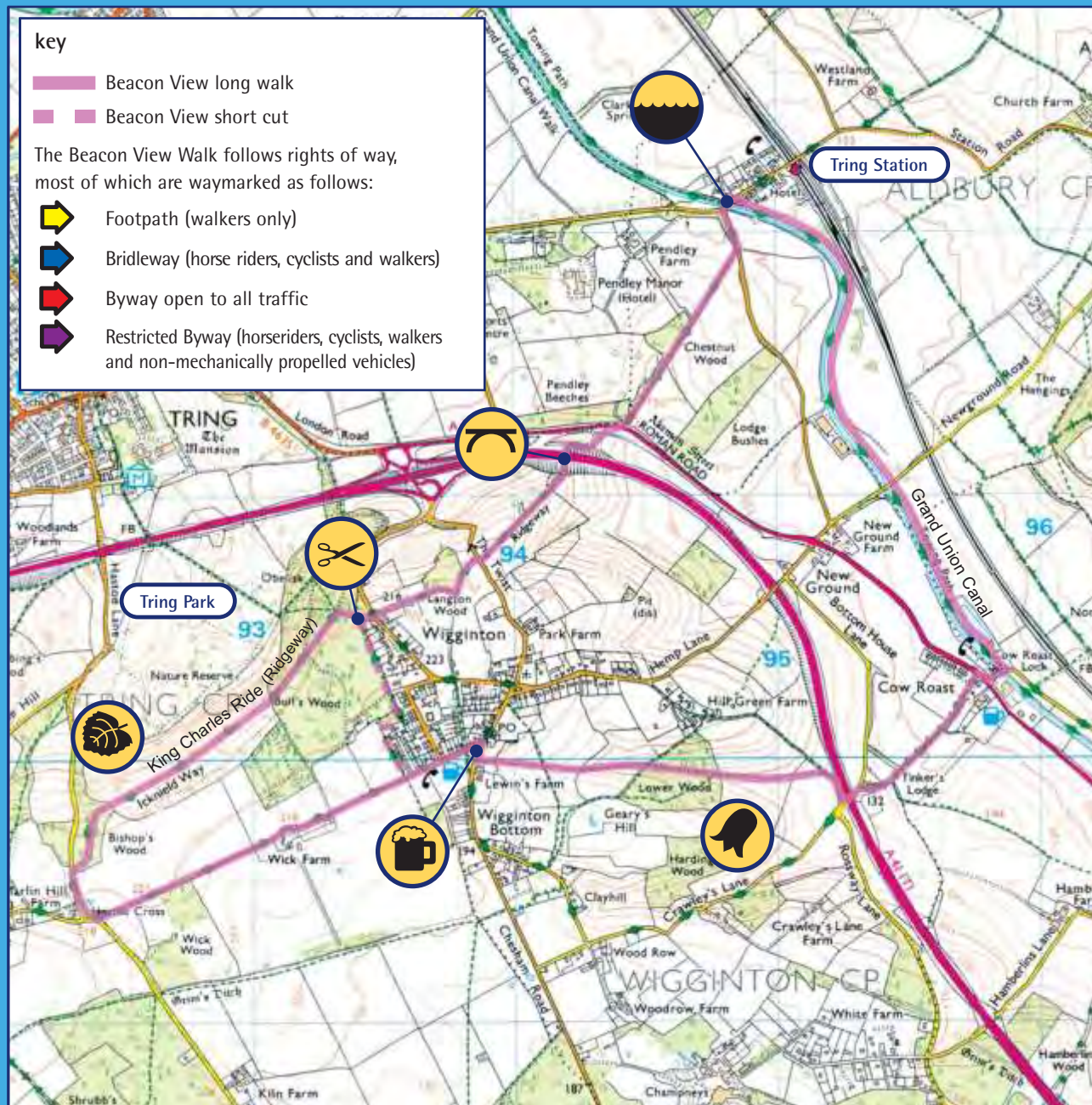
The Ridgeway crosses the A41 on this award-winning footbridge.



Join the Grand Union Canal and follow the towpath all the way to Cow Roast, so called because it was a stop off point for cattle on their way to London markets, 'Cows Rest'



Follow the footpath through Lower Wood. This ancient semi-natural woodland is mainly Beech, typically found on these chalk hills. The wood is carpeted in spring with flowers such as wood anemone and bluebells.



scale: 1 kilometre



Please be considerate in the countryside - keep to footpaths, especially through crops, and leave farm gates as you find them. Beware of traffic on country roads.